

PF0004A Dome Tracker Firmware upgrade procedure

Rev	Date	Qui	Quoi
1.0	27/12/2013	F. Cochard	First revision

1 Introduction

This document describes how to upgrade the Dome Tracker firmware. The upgrade is only made by software, there is no need to open the Dome Tracker box.

2 Required tools & data

The upgrade must be done on a Windows PC (preferably Win 7 or above – but it should work with previous versions).

To make the upgrade, you need following elements :

- Upgrade software tool. This is a file called **UpLoader_Pic.exe**
- The firmware data file. This is a file with .hex extension. For instance, the latest version is **dome_20_12_2013_v1.57.hex**
- The Dome Tracker test tool (normally installed along with the Dome tracker driver). This is the file **Test_DomeTracker.exe**

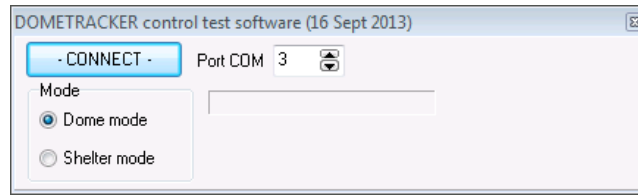
Note : To run properly, the Dome Tracker Test software, the Dome Tracker driver must be installed n your PC.

3 Upgrade procedure

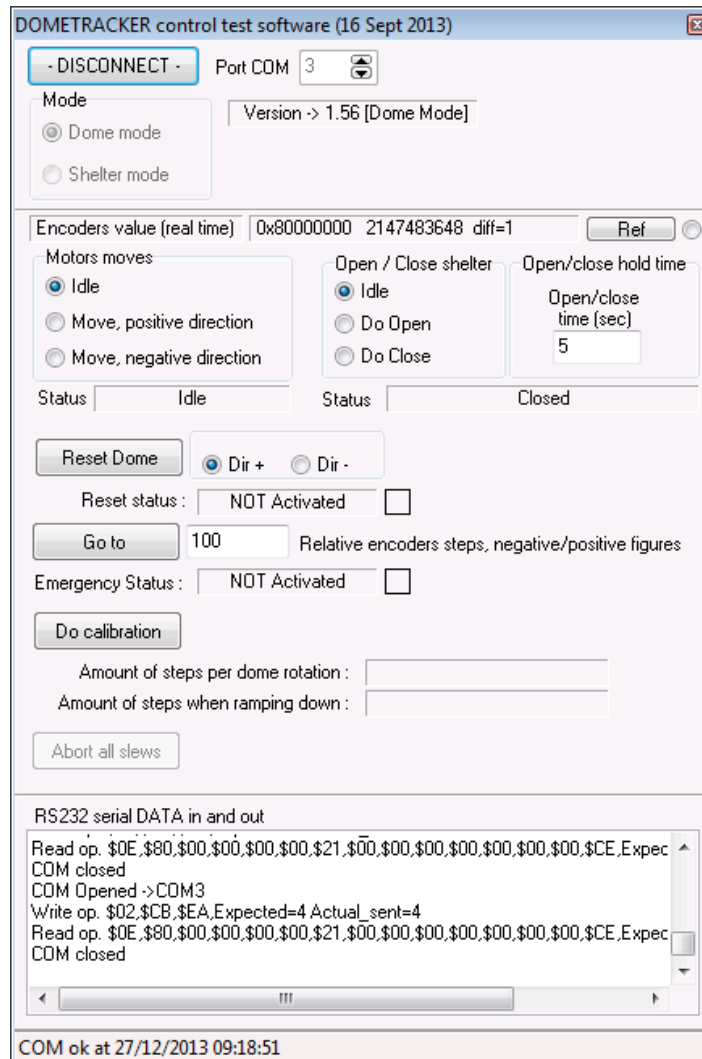
First, we recommend to check the initial version of the Dome Tracker firmware. Connect the Dome Tracker to the PC, through the RS232 cable.

Switch on the Dome Tracker by plugging power supply connector (12V) on the rear face. The front LED blinks quickly during few seconds.

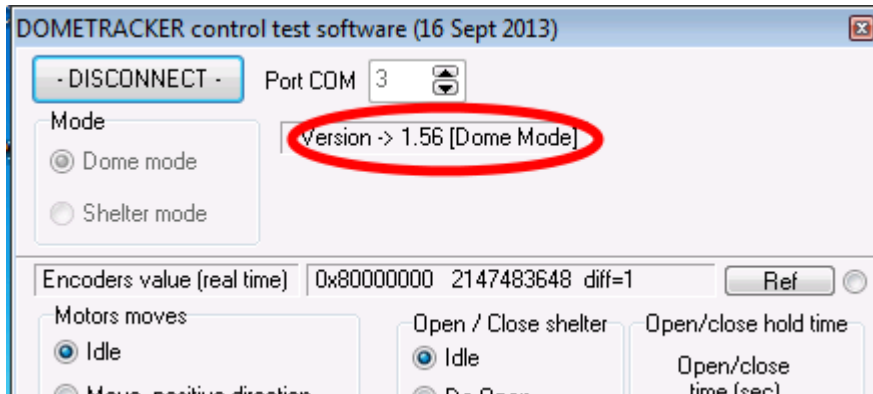
Run the Dome Tracker Test software : **Test_DomeTracker.exe**



Select the right COM port (you can see it in the Windows Control Panel). In our case, this is COM3. Click on connect:



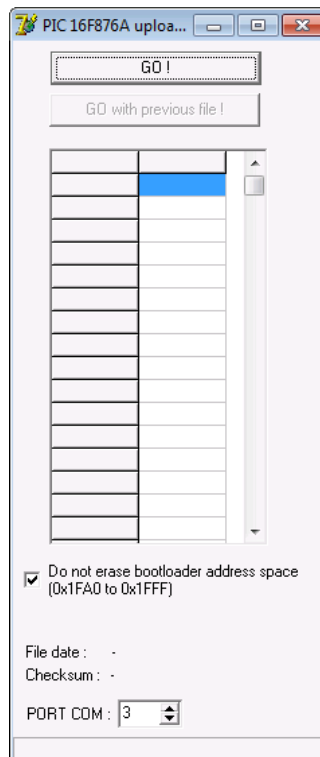
On the top of the window, you can read the current version of the Dome Tracker firmware version. In our case, this is V1.56:



Once you've checked the firmware version, you can disconnect the Dome Tracker, to release the COM port.

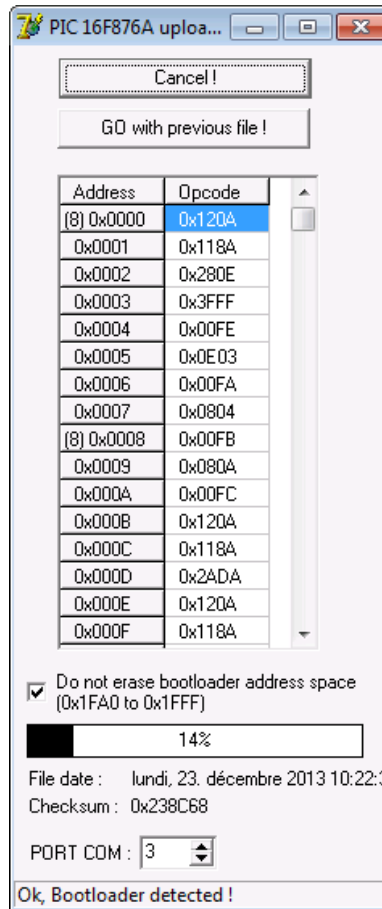
Ensure that the firmware data file (.hex file) is in the same directory as the Upgrade software **UpLoader_Pic.exe**.

Now, run the Upgrade software **UpLoader_Pic.exe** :

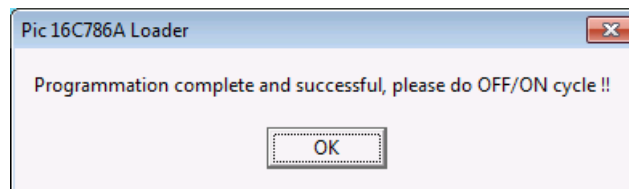


In the bottom part, select the COM port - it should be the same as for Test software (COM3 in our case).

Click on GO ! Button, and select your firmware file (.hex file). The programming starts :

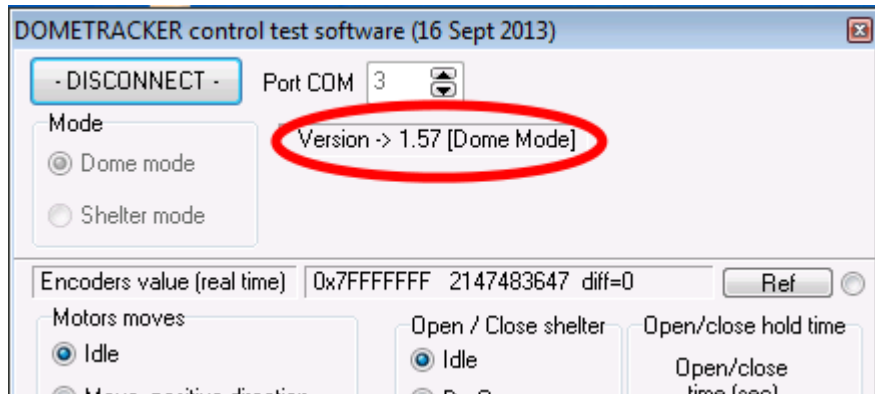


It takes a few seconds to run, and at the end, you have a message telling that it worked fine, and asking for rebooting the Dome Tracker :



unplug the Dome Tracker power supply, for 3-5 seconds, and replug it. It is now updated. Close the Upgrade software windows.

To check that you loaded the latest version, you can re-run the Dome Tracker Tes software, and check the firmware revision. In the example below, the firmware revision is now 1.57:



The Dome Tracker is now ready to run, with the latest firmware revision.

End of the procedure